



**PARASMANI**  
**ENGINEERS (INDIA)**  
An ISO 9001 : 2008 CERTIFIED COMPANY

**Manufacturer, Importers & Stockist of :**  
**S.S., C.S. & A.S. Pipes, Pipe Fitting & Flanges**  
Stockists & Suppliers of Industrial Raw Materials



**PARASMANI ENGINEERS (INDIA) - PEI**

**INDIA'S LEADING MANUFACTURER, STOCKIST AND SUPPLIER OF PIPE FITTINGS & FLANGES**

**BUTTWELD FITTING | FORGED FITTINGS | FORGED FLANGES**

Parasmani Engineers (India) was established in the year 2000 with business of Stocking & Supplying large variety of **Butt-Welding/ Forged Pipe-Fittings, Flanges, Pipes, IBR Fittings**. We also deal in **Tubes & Plates in Stainless Steel, Duplex Steel, Super Duplex Steel, Carbon Steel, Alloy Steel, Nickel/Super Alloys & many other Ferrous/ Non-Ferrous Metals.**

Today, Parasmani Engineers (India) specialize in the manufacturing, processing and supplying wide variety of **industrial forge fittings, flanges & fabricated pipe fittings including Elbows, Tees, Crosses, Reducers, Caps, Nutbolt, Fasteners** and more as per National/ International standards and as per customers special requirements/ specifications/ drawings.

Our increasing list of customers include domestic and international end user companies, international traders/distributors, as well as fitting traders and suppliers based in India. Every manufacturing phase, from forging to welding, from machining to testing, is carried out with a vast array of modern equipments. We provide original Material Test Certificates, Government / NABL approved Laboratory Test Certificates, Third Party Inspection Certificates and Guarantee/ Warranty Certificates for the supplies, our products are of high quality and high performance, with minimum wall thinning rate and ovality and with no wrinkles.

Our customers are end-users, fabricators and distributors around the world. Our mission is to be always able to represent for our customers a reference for reliability, competence and service. We build relationships with our customers, which last and contribute to their success, because we know that their success is our success.

## MANPOWER

ENGINEERS	▶	2
SUPERVISORS	▶	4
FITTERS	▶	2
WELDERS	▶	3
SKILLEDWORKERS	▶	11
UNSKILLEDWORKERS	▶	13

The mission of PEI is to provide the best customer service by supplying materials with the most up-to-date technology, respecting the agreed delivery date, monitoring the progress of the work and satisfying urgent requirements, thanks to our large inventory of raw materials, semi-finished and finished products. Our vision is to continue to expand channel development on an international scale and develop new relationships across the globe.

The five Core Values of our company guide and drive our business decisions, building on the group's beliefs and convictions.

**Quality** : We believe Quality is not an act, it is a habit.

**Integrity** : We believe we have to be true and honest to customers

**Trust** : We believe it can only be achieved by delivering.

**Safety** : We believe safety is a Non Negotiable parameter for us.

**Environment** : We believe in adopting Innovating environment friendly methods and materials

# IN HOUSE TESTING FACILITY

## List of Testing Machines

---

- 01) Hardness Testing
- 02) D. P. Testing Facility
- 03) Calibrated set of Vernier upto 12"
- 04) Calibrated set of Scales
- 05) Calibrated Gauges for S/w Fitting & NPT Fitting
- 06) 90° & 45° Angle Platform

All There are in House Testing & Inspection Facility.

## Material Testing at Laboratories

---

- 01) Chemical Analysis
- 02) Physical Analysis
- 03) Micro
- 04) RadioGraphy
- 05) Ultrasonic
- 06) Spectra etc.

# IN HOUSE INSPECTION



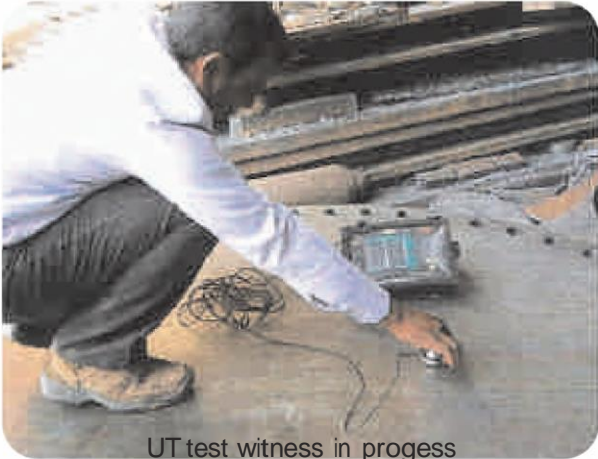
Visual & Dimensional inspection in progress

10.10.2023 10:00 AM



Visual & Dimensional inspection in progress

10.10.2023 10:00 AM



UT test witness in progress

10.10.2023 10:00 AM



Visual & Dimensional inspection in progress

10.10.2023 10:00 AM



# BUTT-WELD FITTINGS



# Butt-Weld Fittings

**Range:** 6 NB upto 1200 NB (1/8" DIA to 48" DIA)

**Dimension:** ANSI/ASME B16.9

MSS-SP-43, MSS P75, JIS2311, JIS2312, JIS2313, DIN2605, GB-12359, GB-T13401.

**Sch:** 5s, 10s, 20s, 40s, 60, 80, XS, 100, 120, 140, 160, XXS & NS available with NACE MR 01-75

**Type:**

• SEAMLESS

• WELDED

• ONE & TWO JOINT

**Types:**

• Elbow in Long Radius in 45 Deg., 90 Deg., 180 Deg., R=3D, 50, 60, 80, 10D, & 200.

• Eccentric & Concentric Reducer.

• Equal & Unequal Tee.

• Caps & Crosses.

• Long & Short Stubend.

**Stainless Steel:**

**Standard:** ASTM / ASME A/SA 403

**Grades:** 304, 304L, 304H, 309S, 309H, 310S, 310H, 316, 316Ti, 316H, 316L, 316LN, 317, 317L, 321, 321 H, 347, 347H, 904L.

**Duplex Steel:**

**Standard:** ASTM / ASME A/SA 815

**Grades:** UNS NO. S 31803, S 32205, S 32550, S 32750, S32760, S32950

**Carbon Steel & Mild Steel:**

**Standard:** ASTM / ASME A/SA 234 / A860 / A420

**Grades:** WPB, WPL3, WPL6, WPHY 42, WPHY 46, WPHY 52, WPHY 60, WPHY 65 & WPHY 70.

**Alloy Steel:**

**Standard:** ASTM / ASME A/SA234.

**Grades:** WP1, WP 5, WP 9, WP 11, WP 12, WP 22, WP 91.

**Nickel Alloy:**

**Standard:** ASTM A336 / ASME SB366

**Grades:** UNS 2200 (NICKEL 200), UNS 2201 (NICKEL 201), UNS 4400 (MONEL 400), UNS 8825 (INCONEL 825), UNS 6600 (INCONEL 600), UNS 6601 (INCONEL 601), UNS 6625 (INCONEL 625), UNS 10276 (HASTELLOY C276).

**Copper Alloy:**

**Standard:** ASTM / ASME SB 111 / 466.

**Grades:** UNS NO. C 10100, 10200, 10300, 10800, 12000, 12200, 70600 (CU-NI-90/10), 71500 (CU-NI-70/30).







# Flanges

**Range:** 15 NB up to 1500 NB

**Class:** 150 LBS, 300 LBS, 400LBS, 600 LBS, 900 LBS, 1500 LBS, 2500 LBS available with NACE MR 01-75

**DIN- STD:** PN6, PN10, PN16, PN25, PN40, PN64, PN100

**We Supply Flange According to API 6A Type 68/6BX list below:**

## Types:

- 2000psi 6B WN/BL Flange
- 3000psi 6B WN/BL Flange
- 5000psi 6B WN/BL Flange
- 2000psi 6BX BL Flange
- 3000psi 6BX BL Flange
- 5000psi 6BX BL Flange
- 10000psi 6BX WN/BL Flange
- 15000psi 6BX WN/BL Flange
- 20000psi 6BX WN/BL Flange

## Types:

- Socket Weld (SWRF)
- Slip on (SORF)
- Blind (BLRF)
- Lap Type Joint (LTJF)
- Screwed
- Spacer Blind
- Weld Neck (WNRF)
- Long Weld Neck (LWNRF)
- Reducing (RF)
- Spectacle Blind
- Ring Type Joint (RTJ)
- Spacer Ring
- Threaded Flange
- Plate Flange
- Orifice Flange
- Expander Flange
- Welda Flange
- Nipo Flange

## Stainless Steel:

**Standard:** ASTM / ASME A/SA 182, A/SA 240

**Grades:** 304, 304L, 304H, 309S, 309H, 310S, 310H, 316, 316TI, 316H, 316L, 316LN, 317, 317L, 321, 321H, 347, 347H, 904L

## Duplex Steel:

**Standard:** ASTM / ASME A/SA 182, A/SA240

**Grades:** F44, F45, F51, F53, F55 & F60

**Grades:** UNS NO S31803, S32205, S32550, S32750, S32760.

## Carbon Steel & Mild Steel:

**Standard:** ANSI, JIS, DIN, EN1092-1, UNI, BS4504, SABS1123, AS2129, GOST-12820

**Dimension:** ANSI B 16.5, BS 1560. BS 10, IS 6392, B-2.1 NPT, API, DIN, JIS. MSS SP 44

## Materials:

- ASTM A105, ASME A105
- ASTM A350: LF1, LF2 CL1/CL2, LF3 CL1/CL2
- ASTM A266: GR.1, GR.2, GR.3, GR.4
- ASTM A694: F42, F46, F48, F50, F52, F56, F60, F65, F70

## Alloy Steel:

**Standard:** ASTM / ASME A/SA 182 / A387 CL.1 & 2

**Grades:** F1, F5, F9, F11, F12, F22, F91 Etc.

## Nickel Alloy:

**Standard:** ASTM / ASME SB 564 / 160 / 472

**Grades:** MONEL ( 400 / K500 ), NICKEL ( 200 / 201 / 205 ), COUPRO NICKEL ( 90 / 10, 66 / 30 / 2 / 2 ), INCONEL ( 600/601/625/825)

INCOLLOY ( 800/800H ), HASTALLOY ( C-4/C-22/C-276/B-2), ALLOYS ( 20 ), TITANIUM ( GR.-1 /GR. -2).

## Copper Alloy:

**Standard:** ASTM / ASME A/SB 61/ 62 /151/ 152.

**Grades:** UNS NO C92200, UNS NO C83600, UNS NO 70600, 71500, C70600 (CU-NI-90/10), C71500, CU-NI-70/30), UNS NO. C10100, C10200, C10300, C10800, C12000, C12200.



# FORGED FITTINGS



# Forged Pipe Fittings

**Range:** 15 NB upto 100 NB (1/4" DIA to 4" DIA)

**Class:** 3000 LBS, 6000 LBS, 9000 LBS available with MACE MR 01-75

**Types:** • SOCKETWELD

• SCREWED

• NPT.

**Types:** - Elbow 45 & 90

• Cross

• Tee

• Full Coupling

• Half Coupling

• Cap

• Union

• Plug

• Swage Nipple

• Hexagon Nipple

• Hexagon Nut

• Hose Nipple

• Nipolet

• Elbolet

• Threadolet

• Flangolet

• Sokolet

• Weldolet

## Stainless Steel:

**Standard:** ASTM / ASME A/SA 182

**Grades:** F304, 304L, 304H, 309S, 309H, 310S, 310H, 316, 316TI, 316H, 316L, 316LN, 317, 317L, 321, 321 H, 347, 347H, 904L.

## Duplex Steel:

**Standard:** ASTM / ASME A/SA 182.

Grades: F44, F45, F51, F53, F55, F60, F61

**Grades:** UNS NO. S 31803, S 32205, S 32550, S 32750, S32760.

## Carbon Steel & Mild Steel:

**Standard:** ASTM A105 / A350

**Grades:** LF2, LF3, F42, F46, F52, F56, F60, F65, F70 Etc.

## Alloy Steel:

**Standard:** ASTM / ASME A/SA 182.

Grades: F1, F5, F9, F11, F12, F22, F91.

## Nickel Alloy:

**Standard:** ASTM/ ASME SB 564/ 160/ 472.

**Grades:** UNS 2200 (NICKEL 200), UNS 2201 (NICKEL 201), UNS 4400 (MONEL 400), UNS 8825 (INCONEL 825), UNS 6600 (INCONEL 600), UNS 6601 (INCONEL 601), UNS 6625 (INCONEL 625), UNS 10276 (HASTELLOY C276). (ALLOY 20 / 20 CB 3)

## Copper Alloy:

**Standard:** ASTM / ASME SB 61 / 62 / 151 / 152.

**Grades:** UNS NO. C 92200, UNS NO. C 83600, UNS NO. C 70600, 71500 (CU-NI- 90/10), C 71500 (CU-NI- 70/30), UNS NO. C 10100, C 10200, C10300, C 10800, C 12000, C 12200.



# OLETS



**Range:** 15NB UPTO 600 NB

**Class:** 3000 LBS, 6000 LBS, 9000 LBS Available with NACE MR 01-75

**Sch.:** 5S, 10S, 10, 20, 40S, 40, STD., 60, 80S, XS, 100, 120, 140, 160 & XXS Available with NACE MR 01-75

**Types:**

- Sockolet
- Elbolet
- Nippolet
- Brazolet
- Threadolet
- Insert Weldolet
- Coupolet
- Nipo-flange
- Weldolet
- Sweepolet
- Latrolet
- Flexolet butt weld
- Flexolet socket weld
- Flexolet threaded

## **Stainless Steel:**

**Standard:** ASTM / ASME A / SA 182

**Grades:** 304, 304L, 304H, 309S, 309H, 310S, 310H, 316, 316H, 316L, 316Ti, 317, 317L, 321, 321H, 347, 347H.

## **Duplex Steel:**

**Standard:** ASTM / ASME A / SA 182

**Grades:** F44, F45, F51, F53, F55, F60

## **Carbon Steel & Mild Steel:**

**Standard:** ASTM / ASME A / SA 105 / A694 / A350 LF2 & LF3

**Grades:** F42, F46, F52, F56, F60, F65, F70

## **Alloy Steel:**

**Standard:** ASTM / ASME A / SA 182

**Grades:** F1, F5, F9, F11, F12, F22, F91.

## **Nickel Alloy:**

**Standard:** ASTM / ASME SB 564 / 160 / 472.

**Grades:** UNS 2200 (NICKEL 200), UNS 2201 (NICKEL 201), UNS 4400 (MONEL 400), UNS 8825 (INCONEL 825), UNS 6600 (INCONEL 600), UNS 6601 (INCONEL 601), UNS 6625 (INCONEL 625), UNS 10276 (HASTELLOY C276).

## **Copper Alloy:**

**Standard:** ASTM / ASME SB 61 / 62 / 151 / 152

**Grades:** UNS NO. C 70600 (CU - NI - 90/10) / C 71500 (CU - NI - 70/30) / C 71640



You are most welcome for contacting Parasmani Engineers (I) and we request you to enlist our name in your approved suppliers list .Also send us your every purchase enquiries for your requirements and enable us to submit our most competitive offers for the supply. If anyform is available for vendor registration, please send us the same.

If you require any more information's, please feel free to check our website [www.parasmani.net](http://www.parasmani.net) and can contact us,

Thanking you and awaiting for your early & favorable response to start long and fruitful business relationship.

Best regards,

***Navesk Munot***

*(MARKETING-HEAD)*

***Parasmani Engineers (India)***

**Mobile: +91 99671 81117**

**Telephone: +91 22- 6636 2404**

**E-Mail: [sales@parasmani.net](mailto:sales@parasmani.net)/ [salesparasmani10@gmail.com](mailto:salesparasmani10@gmail.com)/ [info123parasmani@gmail.com](mailto:info123parasmani@gmail.com)**

**Website: [www.parasmani.net](http://www.parasmani.net)**

**Add: Office No. 1415, Prasad Chambers, 14th Floor, Tata Road No.2,**

**Opera House , Charni Road (E) , Mumbai -400004 , Maharashtra, India.**

